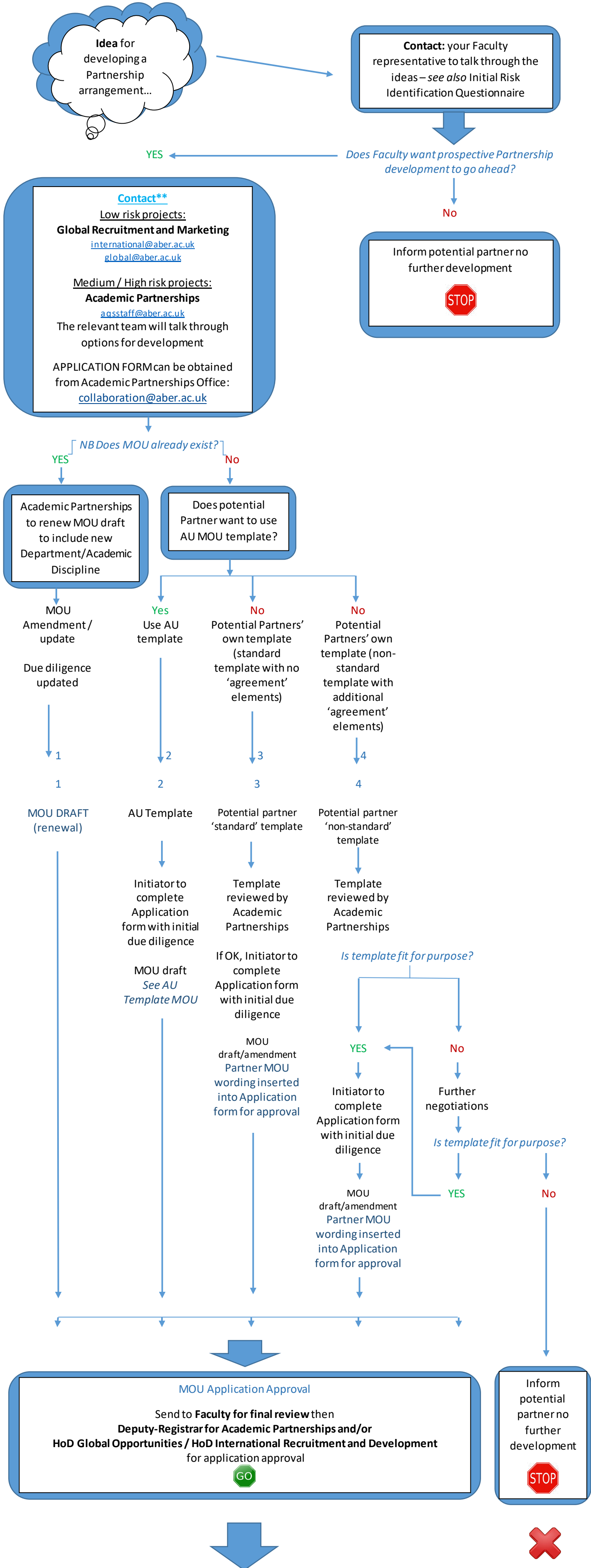


PROCESS FOR PARTNERSHIP AUTHORISATION:
MOUs



MOU Application Approval
Send to **Faculty for final review** then
Deputy-Registrar for Academic Partnerships and/or
HoD Global Opportunities / HoD International Recruitment and Development
for application approval
GO

Inform potential partner no further development
STOP



MOU signatures



Send to
PVC for Learning, Teaching and Student Experience (if University wide)
for final signature of MOU.

Report new MOU to Faculty Academic Affairs Committee
then to Collaborative Provision Committee

****CONTACT INFORMATION**

Faculty Review:

ARTS AND SOCIAL SCIENCES

Gethin Rhys, Faculty Registrar FASS -
ger@aber.ac.uk

Stephen Atherton, Associate Dean FASS -
sta@aber.ac.uk

BUSINESS AND PHYSICAL SCIENCES

Meinir Davies, Faculty Registrar FBPS -
met@aber.ac.uk

Fred Long, Associate Dean FBAPS -
fwl@aber.ac.uk

EARTH AND LIFE SCIENCES

Rebecca Edwards, Faculty Registrar FELS -
rje@aber.ac.uk

Jo Hamilton, Associate Dean FELS -
jvh@aber.ac.uk

Governance:

For details of Governance (including details of Senate Sub-Committees and University Calendar)
See website: <https://www.aber.ac.uk/en/corporate-information/governance/>

Partnership Review:

❖ **Academic Partnerships Office (APO)** within the Academic Registry collaboration@aber.ac.uk
for higher risk, interdepartmental, multi-agency projects such as Franchise, Validation and Dual/Joint degree agreements AND medium risk Student Mobility Partnerships such as Articulation arrangements;

For details of Academic Partnerships Office and related information:
See website: [AcademicPartnerships - Aberystwyth University](https://www.aber.ac.uk/en/academic-partnerships/)

Email: agsstaff@aber.ac.uk for further information or to book a consultation.

❖ **Global Opportunities (GO)** global@aber.ac.uk a division within the Marketing and Student Recruitment department.
for lower risk Recruitment Student Mobility Partnerships (such as Exchange, Study Abroad and Erasmus programmes).

❖ **International Recruitment & Development (IRD)** international@aber.ac.uk a division within the Marketing and Student Recruitment department.
for lower risk Recruitment Partnerships (through both standard and advanced entry, such as progression agreements).